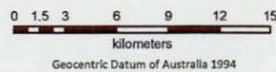
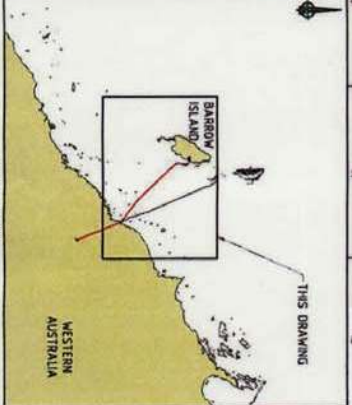
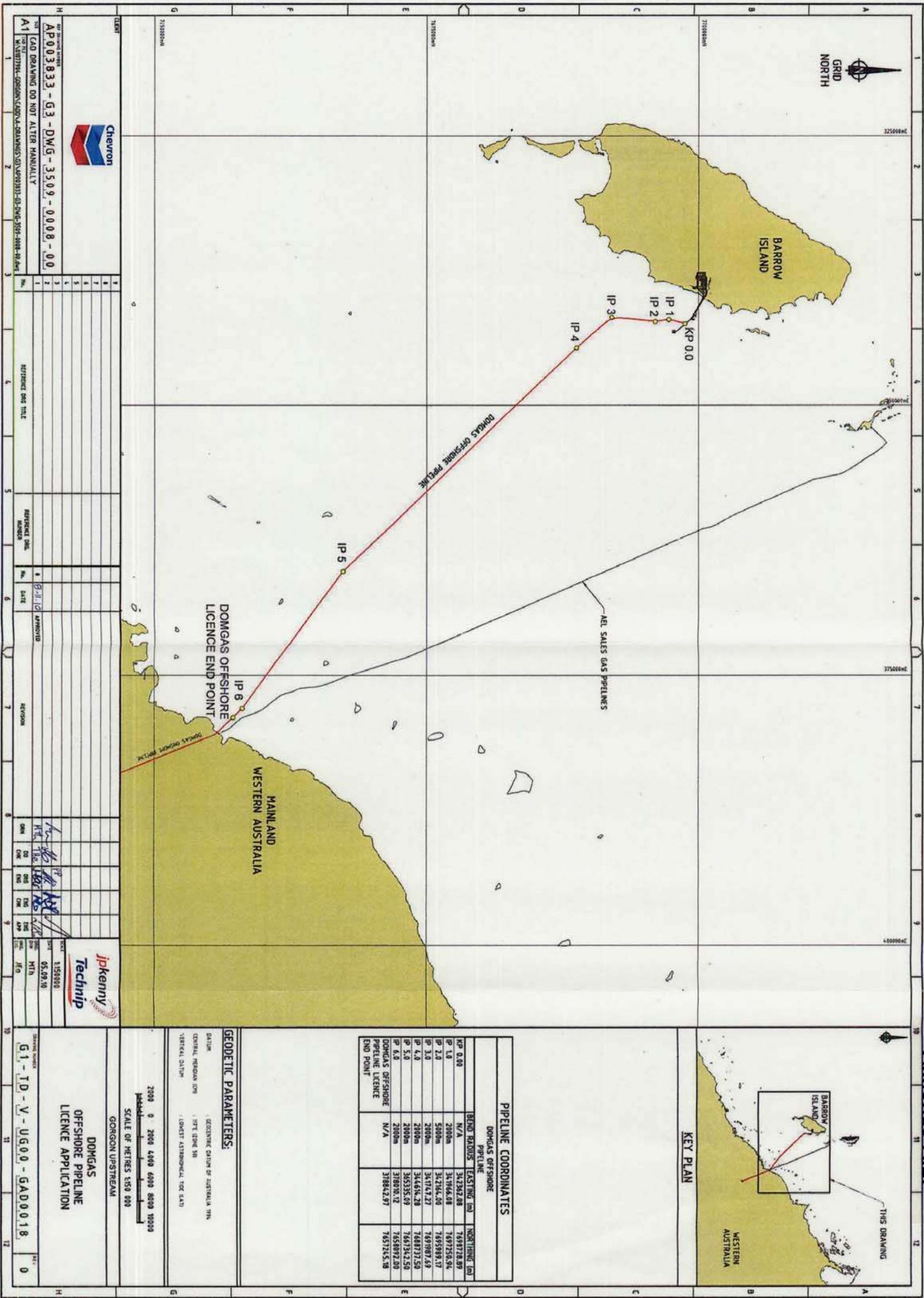


Government of Western Australia
Department of Mines and Petroleum



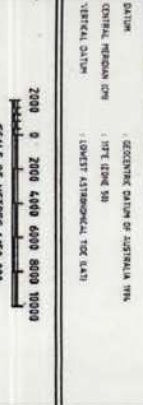
Gorgon - DomGas Pipeline Overall Schematic





PIPELINE COORDINATES			
DOMGAS OFFSHORE PIPELINE			
KP	BEING TRACKED	EASTING (m)	NORTHING (m)
IP 1.0	N/A	342362.08	7697728.89
IP 2.0	2000m	341964.08	7697258.94
IP 3.0	2000m	342156.00	7695988.17
IP 4.0	2000m	341747.27	7697087.69
IP 5.0	2000m	344616.28	7689737.50
IP 6.0	2000m	365335.69	7661342.50
DOMGAS OFFSHORE PIPELINE LICENCE	N/A	378870.12	7658892.00
END POINT		378842.87	7657245.18

GEODETIC PARAMETERS:
 DATUM: GDS/EGRS
 CENTRAL REGION (M) : 1978 (LONG 98)
 VERTICAL DATUM: LOWEST ALTIMETRIC (EX LATI)



DOMGAS OFFSHORE PIPELINE LICENCE APPLICATION
 GORGON UPSTREAM



PROJECT NO: 1356000
 DATE: 05/09/18
 DRAWN BY: [Signatures]
 CHECKED BY: [Signatures]
 APPROVED BY: [Signatures]

CHEVRON
 AP003833-G3-DWG-3509-0008-00
 CAD DRAWING DO NOT ALTER MANUALLY
 A1
 WESTERN AUSTRALIA-DOMGAS-G3-DWG-3509-0008-00

NO.	REVISION	DATE	BY	CHK	APP	REV
1	ISSUED FOR CONSTRUCTION	05/09/18	[Signature]	[Signature]	[Signature]	[Signature]

SCALE OF METRES 1:50 000
 0 2000 4000 6000 8000 10000