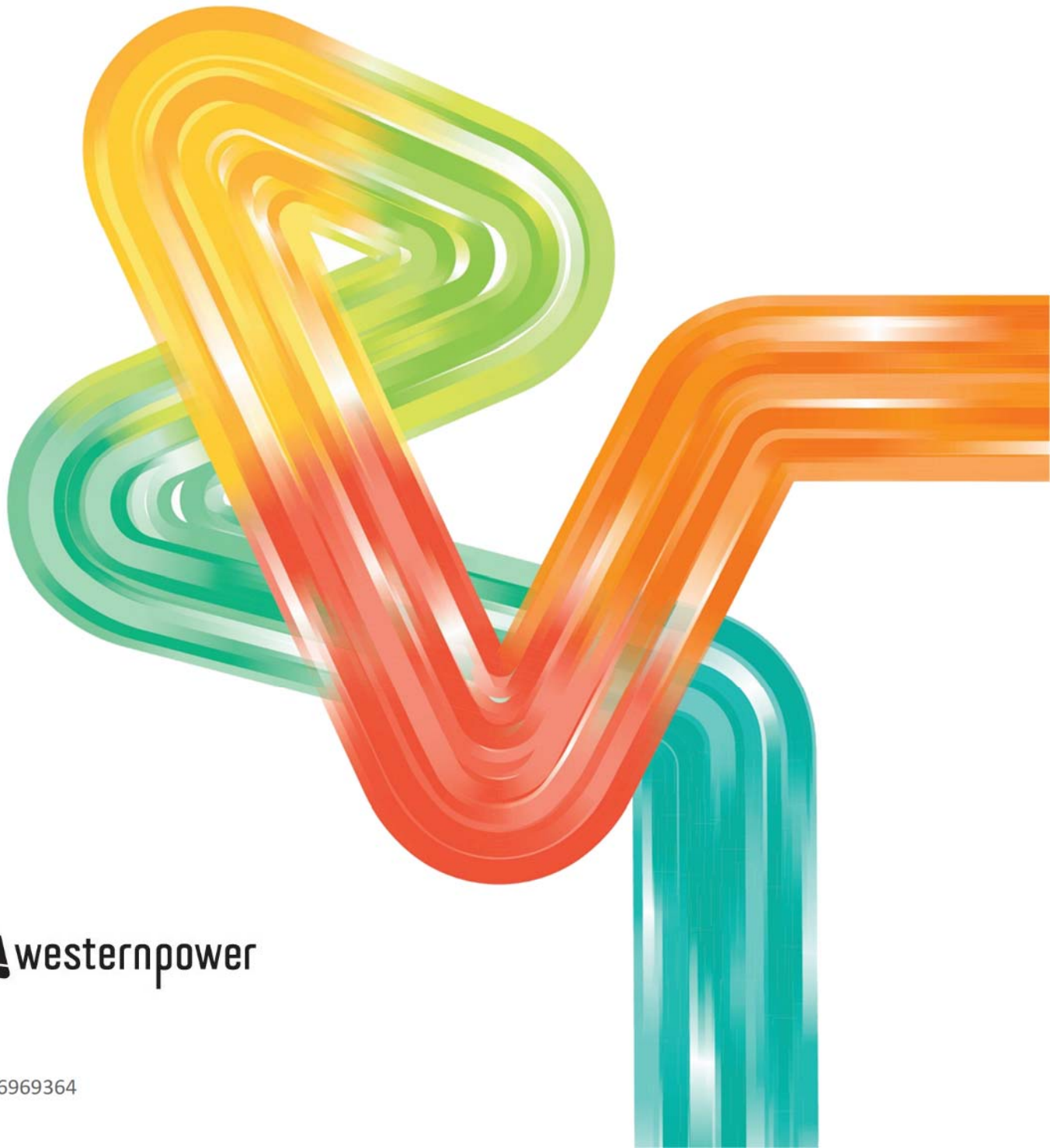


# Attachment 13.3

## Contributions Policy Change Summary Access Arrangement Information

1 February 2022



# Contents

- 1. Introduction .....1
- 2. Proposed Amendments .....2

# 1. Introduction

The *Contributions Policy* is a requirement of Chapter 5 of the *Electricity Networks Access Code 2004* (the Code) and provides for the approach to charging customers seeking to connect a new site to the electricity network or upgrade an existing connection.

The objectives for the *Contributions Policy* defined in the Code are shown in the diagram below.

Figure 1: Contribution Policy - Access Code provisions

- 5.12 The objectives for a *contributions policy* must be that:
- (a) it strikes a balance between the interests of:
    - (i) *contributing users*; and
    - (ii) *other users*; and
    - (iii) *consumers*; and
  - (b) it does not constitute an inappropriate barrier to entry.<sup>276</sup>
- 5.13 A *contributions policy* must facilitate the operation of this Code, including:
- (a) sections 2.10 to 2.12; and
  - (b) the test in section 6.51A; and
  - (a) sections 5.14 and 5.17D; and
  - (c) the *regulatory test*.<sup>277</sup>

The *Contributions Policy* was replaced in July 2021 by Energy Policy WA with a transitional version to reflect new changes made to the Access Code.

This document summarises the proposed changes to the transitional *Contributions Policy* for Western Power's Fifth Access Arrangement and the rationale for each of the proposed changes.

Western Power is not proposing any significant amendments to the transitional *Contributions Policy*. Western Power is committed to facilitating customer connections to the Western Power network and welcomes further stakeholder engagement to ensure the *Contributions Policy* meets both customer and Western Power requirements.

This summary document supports the proposed changes to Access Arrangement Appendix C.1: Contributions Policy, which details proposed changes in both "tracked change" mode and as an unmarked version.

## 2. Proposed Amendments

The proposed amendments and their rationale for change are detailed in Table 2.1 below.

**Table 2.1: Proposed amendments to the Contributions Policy**

No.	Clause	Current State/Definition	Proposed Change	Rationale for Change
1	4.3	Security clauses	It is proposed to amend the existing security clauses to improve clarity.	To better enable Western Power's connecting customers to understand when, and for how long, security may be held by Western Power.
2	Miscellaneous		Minor amendments are proposed to a number of references and terminology throughout the Contributions Policy to improve clarity and readability.	To improve the readability and ensure consistency throughout the Contributions Policy.